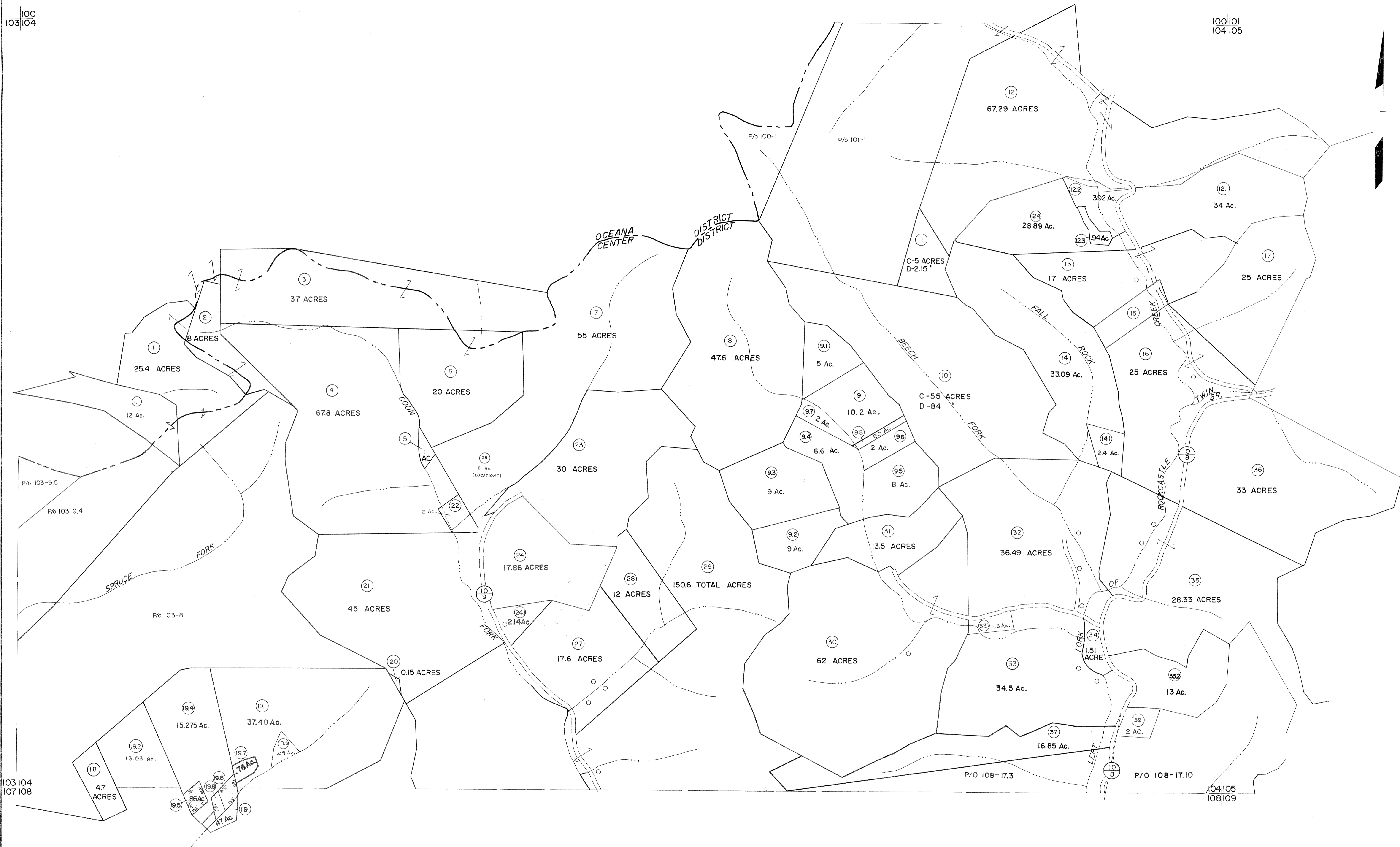


100  
103|04

100|01  
104|05



103|04  
107|08

104|05  
108|09

**For Tax Purposes Only**

Prepared by  
**MICHAEL BAKER, JR., INC.**  
Consulting Engineers  
Rochester, Pennsylvania

**Legend**

Property line	—————	Original lot line	-----
Edge of pavement or roadway	-----	Deed lot number	(15)
Corporation line	-----	Parcel or index number	(19)
District line	-----	Improvement	o
County line	-----	Railroad	o

**Revisions**

1	3-1-64	9	OGIS	2/26/94	DSH	17
2	3/11/75	10	O.G.I.S	9-20-95	J.E.B	18
3	Revised to 7-1-81	11	OGIS	12/26/96	SAJ	19
4	Revised to July 83	12	SLS INC.	12/31/97	DSW	20
5	July 1985	13	ESI	2/5/02	REK	21
6	Revised to 7-1-87	14				22
7	OGIS	15	SAJ			23
8		16				24

**KEY MAP**



**WYOMING COUNTY**  
STATE OF WEST VIRGINIA  
Office of Assessor

**DISTRICT**

**CENTER**

**SHEET NO:104**

Date, Aerial Photography: November, 1962 Date, Map: April, 1963  
Photo No. Scale: 1"=400'