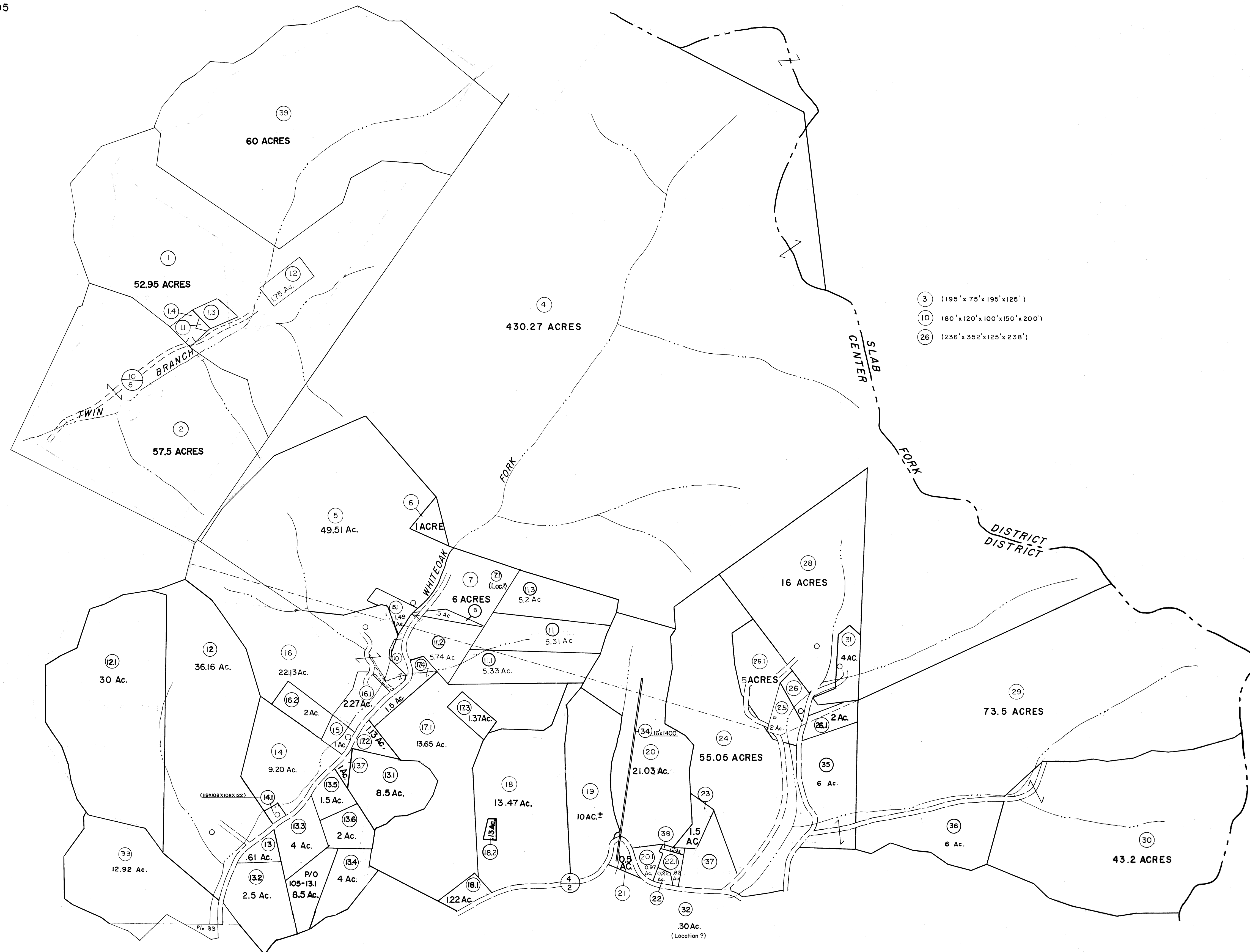


100 | 101
104 | 105

101 |
105 |



104 | 105
108 | 109

105 |
109 |

For Tax Purposes Only

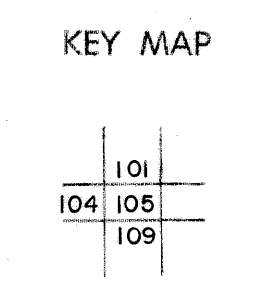
Prepared by
MICHAEL BAKER, JR., INC.
Consulting Engineers
Rochester, Pennsylvania

Legend

Property line	—————	Original lot line	-----
Edge of pavement or roadway	-----	Deed lot number	(15)
Corporation line	-----	Parcel or index number	(19)
District line	-----	Improvement	o
County line	-----	Railroad	—+—

Revisions

1	3-1-64	9	OGIS	12/26/96	SAJ	17
2	3/11/75	10	SLS INC.	1/2/98	DSW	18
3	Revised to 7-1-81	11	SLS INC.	11/13/98	DSW	19
4	Revised to 3-14-83	12	ESI	2/21/01	REK	20
5	July 1985	13	ESI	1/28/03	REK	21
6	Revised to 7-1-87	14				22
7	OGIS	15				23
8	OGIS	16				24



WYOMING COUNTY
STATE OF WEST VIRGINIA
Office of Assessor

DISTRICT
CENTER
SHEET NO: 105
Date, Aerial Photography: November, 1962 Date, Map: April, 1963
Photo No. Scale: 1" = 400'