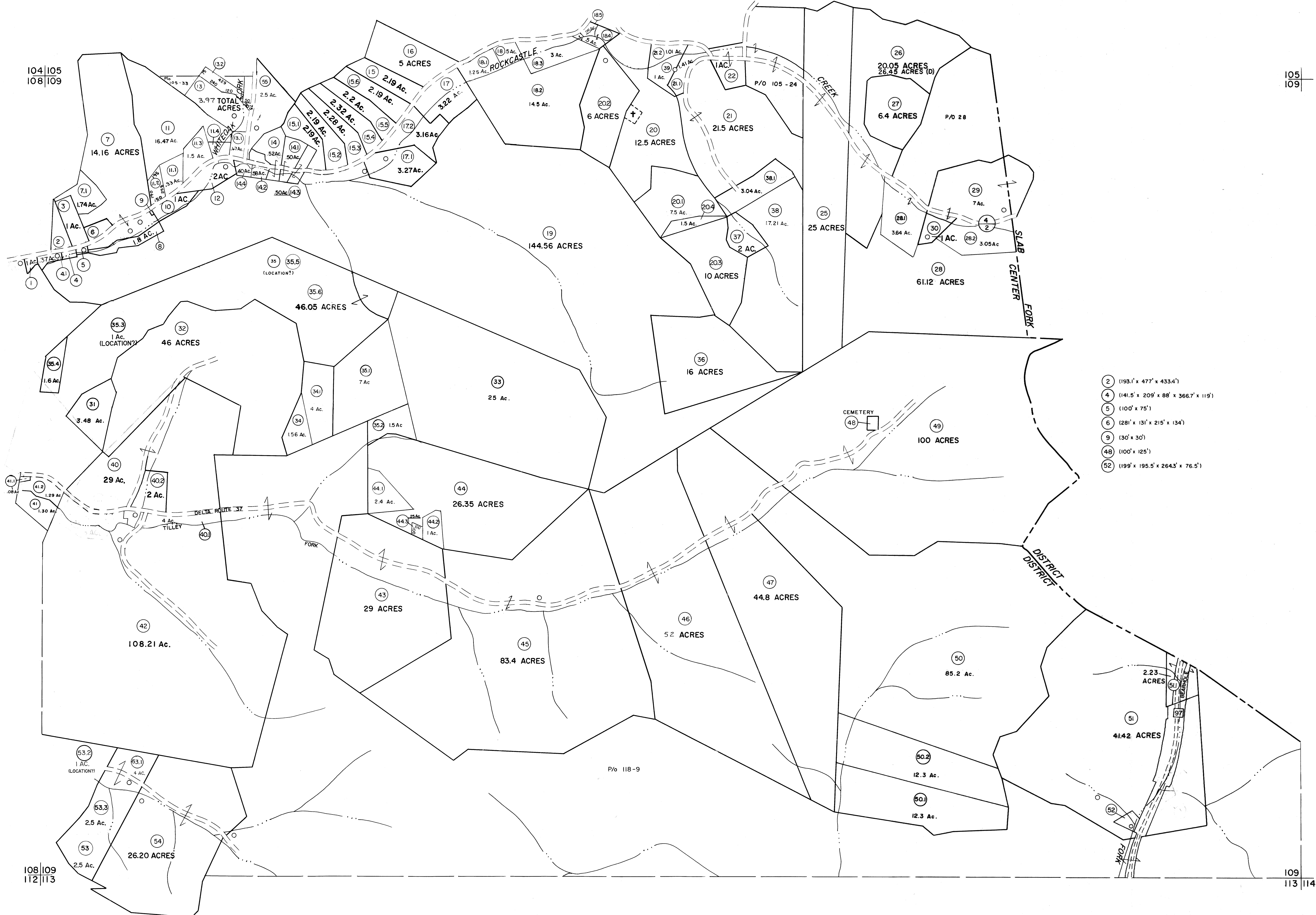


104|105
108|109

105
109



- 2 (193.1' x 477' x 433.4')
- 4 (141.5' x 209' x 98' x 366.7' x 119')
- 5 (100' x 75')
- 6 (281' x 131' x 215' x 134')
- 9 (30' x 30')
- 48 (100' x 125')
- 52 (199' x 195.5' x 264.3' x 76.5')

For Tax Purposes Only
 Prepared by
MICHAEL BAKER, JR., INC.
 Consulting Engineers
 Rochester, Pennsylvania

Legend	
Property line	Original lot line
Edge of pavement or roadway	Deed lot number
Corporation line	Parcel or index number
District line	Improvement
County line	Railroad

Revisions	
1 5-1-64	9 O.G.I.S 9-20-95 J.E.B. 17
2 3/10/75	10 SLS INC 1/2/97 JWM 18
3 Revised to 7-1-81	11 SLS INC 11/16/98 DSW 19
4 Revised to July 83	12 SLS INC 1/24/00 DSW 20
5 July 1985	13 ESI 2/16/01 REK 21
6 Revised to 7-1-87	14 ESI 2/5/02 REK 22
7 REV TO 7-1-88	15 ESI 1/30/03 REK 23
8 OGIS 11/1/92 SAJ 16	

KEY MAP

WYOMING COUNTY
 STATE OF WEST VIRGINIA
 Office of Assessor

DISTRICT
CENTER
 SHEET NO: 109
 Date, Aerial Photography: November, 1962 Date, Map: April, 1963
 Photo No: Scale: 1" = 400'