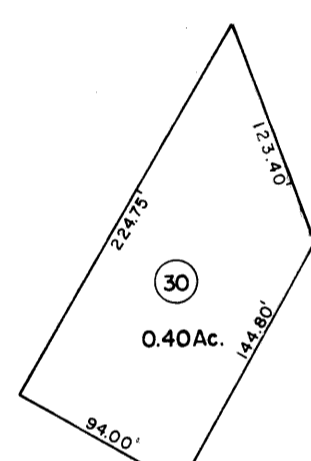


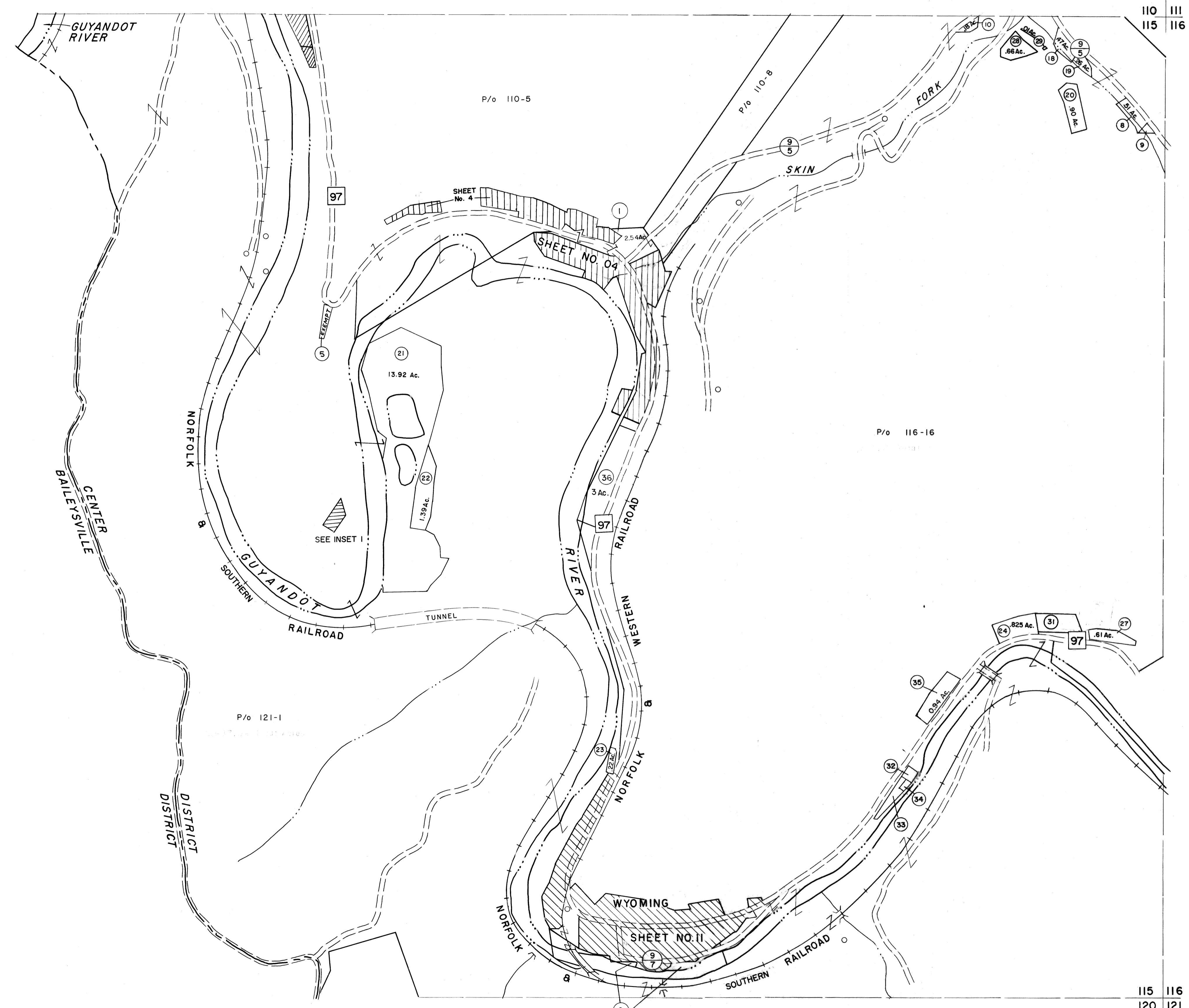
110  
115

110 111  
115 116

- 8 .51 Ac.
- 9 (.07.09 X 145.57 X 106.12) .13 Ac.
- 10 (103.65 X 116.54 X 82.29 X 55.07 X 120.41) .18 Ac.
- 12 (122.25 X 104.35 X 119.41 X 107.85 X 116.55 X 60.84) .55 Ac.
- 13 (.054 X 101.85 X 20.76 X 97.29 X 71.89 X 133.28 X 72.03) 3.9 Ac.
- 14 (139.12 X 143.94 X 195.39 X 78.61 X 74.83 X 97.6) .49 Ac.
- 18 (83.92 X 80.91 X 59.28 X 86.62 X 131.04 X 55.3 X 66.58 X 62.22) .47 Ac.
- 19 (69.6 X 81.1 X 60.68 X 46.4 X 66.48 X 64.14 X 86.62) .26 Ac.
- 23 (69.97 X 62.01 X 183.08 X 28 X 17)
- 25 (208.74 X 105.07 X 52 X 81 X 71 X 14.4) .68 Ac.
- 27 (93.91 X 84.54 X 141.57 X 91.8 X 66.06 X 139.08 X 165.03 X 59.57) .78 Ac.
- 35 (211.75 X 618 X 227.75 X 67.75) .32 Ac.



INSET I  
SCALE: 1" = 100'



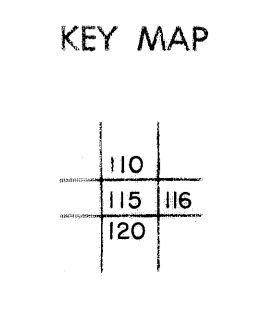
C - 2 ACRES  
D - 4.39 "

For Tax Purposes Only

Prepared by  
MICHAEL BAKER, JR., INC.  
Consulting Engineers  
Rochester, Pennsylvania

Legend	
Property line	—
Edge of pavement or roadway	— — — —
Corporation line	— · — · —
District line	— · — · — · —
County line	— · — · — · — · —
Original lot line	- - - - -
Deed lot number	(15)
Parcel or index number	(99)
Improvement	○
Railroad	— + — + — + — + —

Revisions			
1	3-1-64	9	REV. TO 7-1-88 NCS
2	3/10/75 JC	10	OGIS 11/1/92 SAJ
3	Revised to 7-1-81	11	OGIS 2/20/94 SAJ
4	Revised to 3/14/83 L.M.	12	O.G.I.S 9-20-95 J.E.B
5	Revised to 7-1-88	13	SLS INC. 11/16/98 DSW
6	July 1985	14	ESI 2/5/02 REK
7	Revised to 7-1-87	15	ESI 1/30/03 REK
8		16	



WYOMING COUNTY  
STATE OF WEST VIRGINIA  
Office of Assessor

DISTRICT	CENTER
SHEET NO:	115
Date, Aerial Photography:	November, 1962
Date, Map:	April, 1963
Photo No.:	
Scale:	1" = 400'