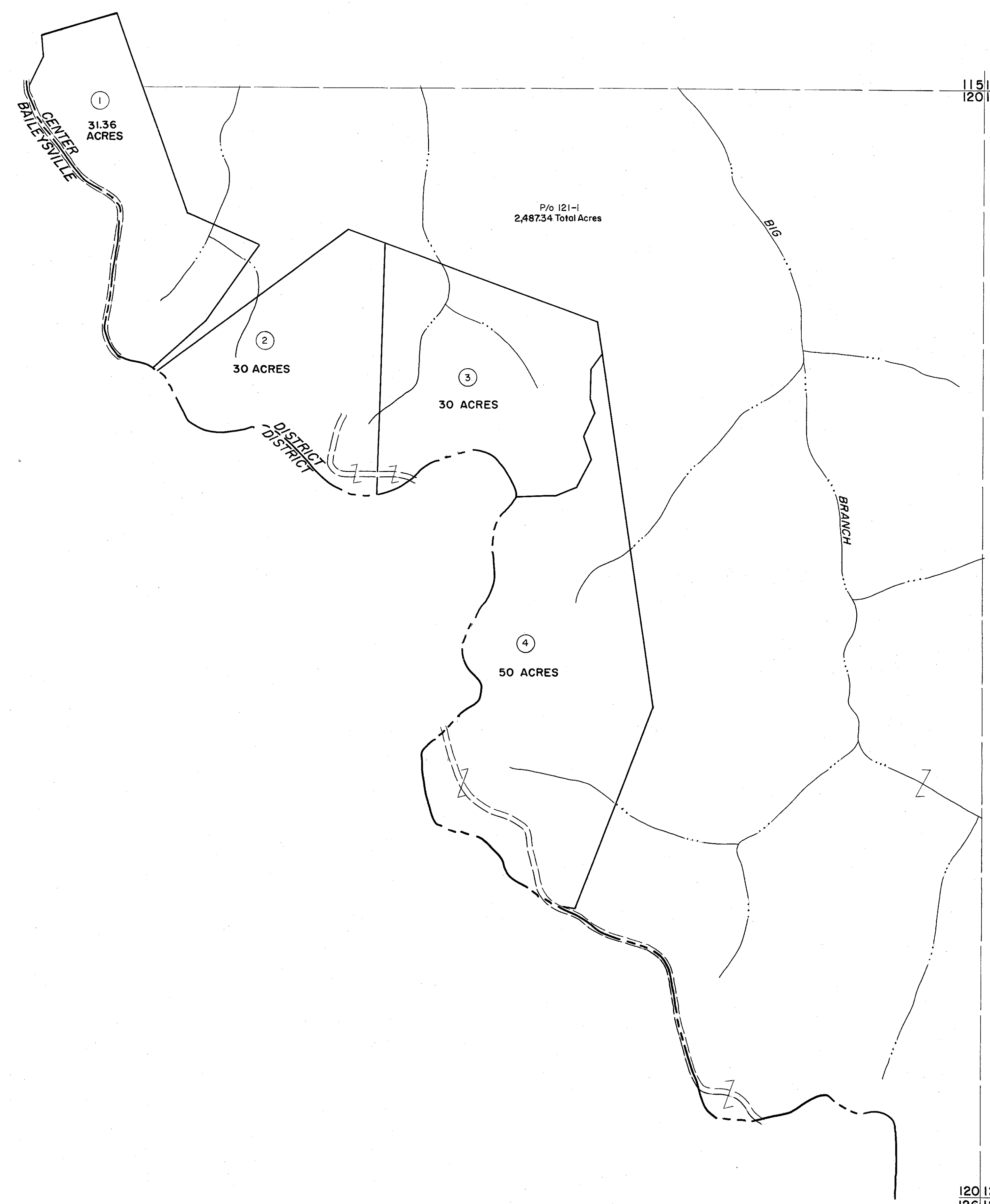


115  
120

115 116  
120 121



120  
126

120 121  
126 127

For Tax Purposes Only

Prepared by  
MICHAEL BAKER, JR., INC.  
Consulting Engineers  
Rochester, Pennsylvania

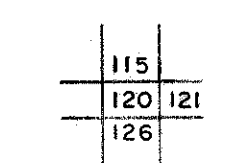
Legend

Property line	—————	Original lot line	-----
Edge of pavement or roadway	=====	Deed lot number	(15)
Corporation line	-----	Parcel or index number	(22)
District line	-----	Improvement	o
County line	-----	Railroad	+

Revisions

1	3-1-64	9	
2	Revised to 7-1-61	10	
3		11	
4		12	
5		13	
6		14	
7		15	
8		16	
		17	
		18	
		19	
		20	
		21	
		22	
		23	
		24	

KEY MAP



WYOMING COUNTY  
STATE OF WEST VIRGINIA  
Office of Assessor

DISTRICT  
CENTER

SHEET NO: 120

Date, Aerial Photography: November, 1962 Date, Map: April, 1963  
Photo No: Scale: 1"=400'