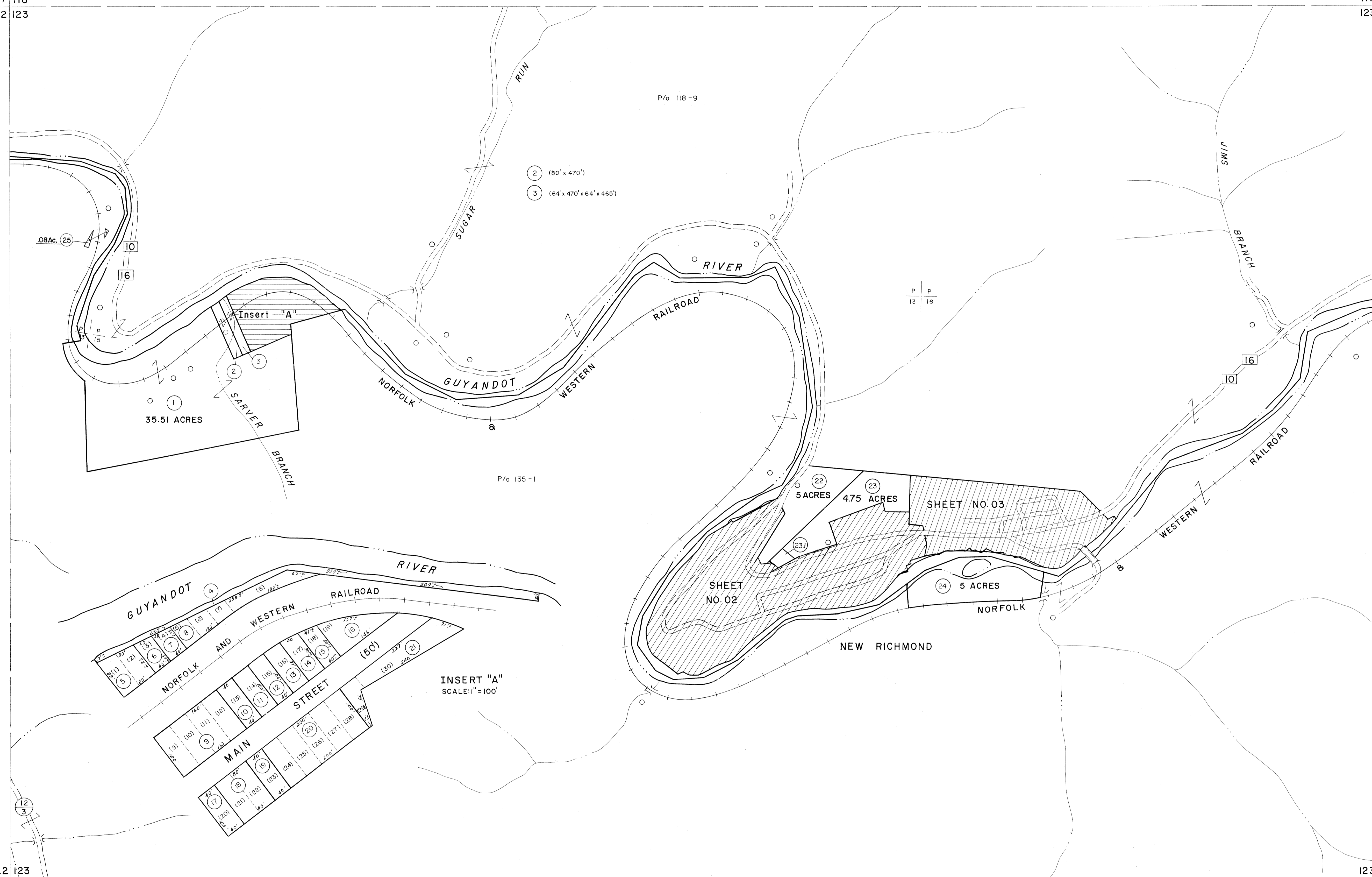


117 118
122 123

118 119
123 124



122 123
128 129

123 124
129 130

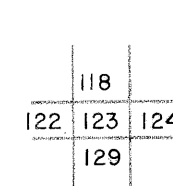
For Tax Purposes Only

Prepared by
MICHAEL BAKER, JR., INC.
Consulting Engineers
Rochester, Pennsylvania

Legend	
Property line	—
Edge of pavement or roadway	- - - -
Corporation line	- · - · -
District line	- - - - -
County line	- - - - -
Original lot line	- · - · -
Dead lot number	(15)
Parcel or index number	(16)
Improvement	○
Railroad	—+—+—+—

Revisions			
1	3-1-64	9	
2	3/7/75	10	JC
3	Revised to 7-1-81	11	
4	OGIS 12/26/96	12	SAJ
5	ESI 2/16/01	13	REK
6		14	
7		15	
8		16	

KEY MAP



WYOMING COUNTY
STATE OF WEST VIRGINIA
Office of Assessor

DISTRICT
CENTER

SHEET NO: 123

Date, Aerial Photography: November, 1962 Date, Map: April, 1963
Photo No: Scale: 1" = 400'