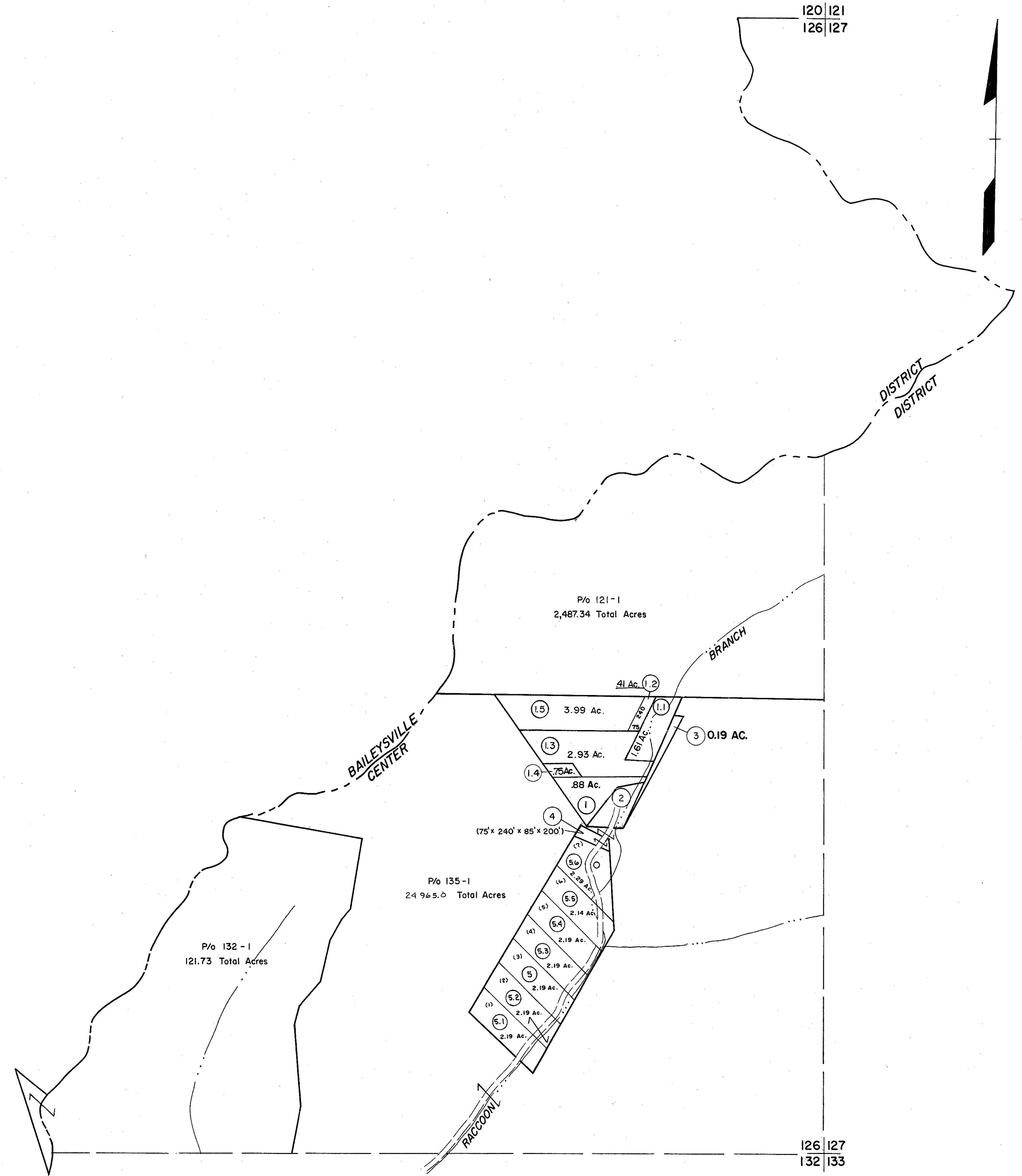


120
126

120 121
126 127

126
132

126 127
132 133



For Tax Purposes Only
 Prepared by
MICHAEL BAKER, JR., INC.
 Consulting Engineers
 Rochester, Pennsylvania

Legend			
Property line	—	Original lot line	—
Edge of pavement or roadway	—	Deed lot number	(15)
Corporation line	—	Parcel or index number	(19)
District line	—	Improvement	o
County line	—	Railroad	—

Revisions			
1	3-1-64	9	17
2	3-7-75	10	18
3	Revised to 7-1-81	11	19
4	Revised to 7-1-81	12	20
5	Revised to 7-1-87	13	21
6	O.G.I.S. 9-20-95	14	22
7		15	23
8		16	24

KEY MAP

WYOMING COUNTY
 STATE OF WEST VIRGINIA
 Office of Assessor

DISTRICT
CENTER

SHEET NO: 126

Date, Aerial Photography: November, 1962 Date, Map: April, 1963
 Photo No: Scale: 1" = 400'