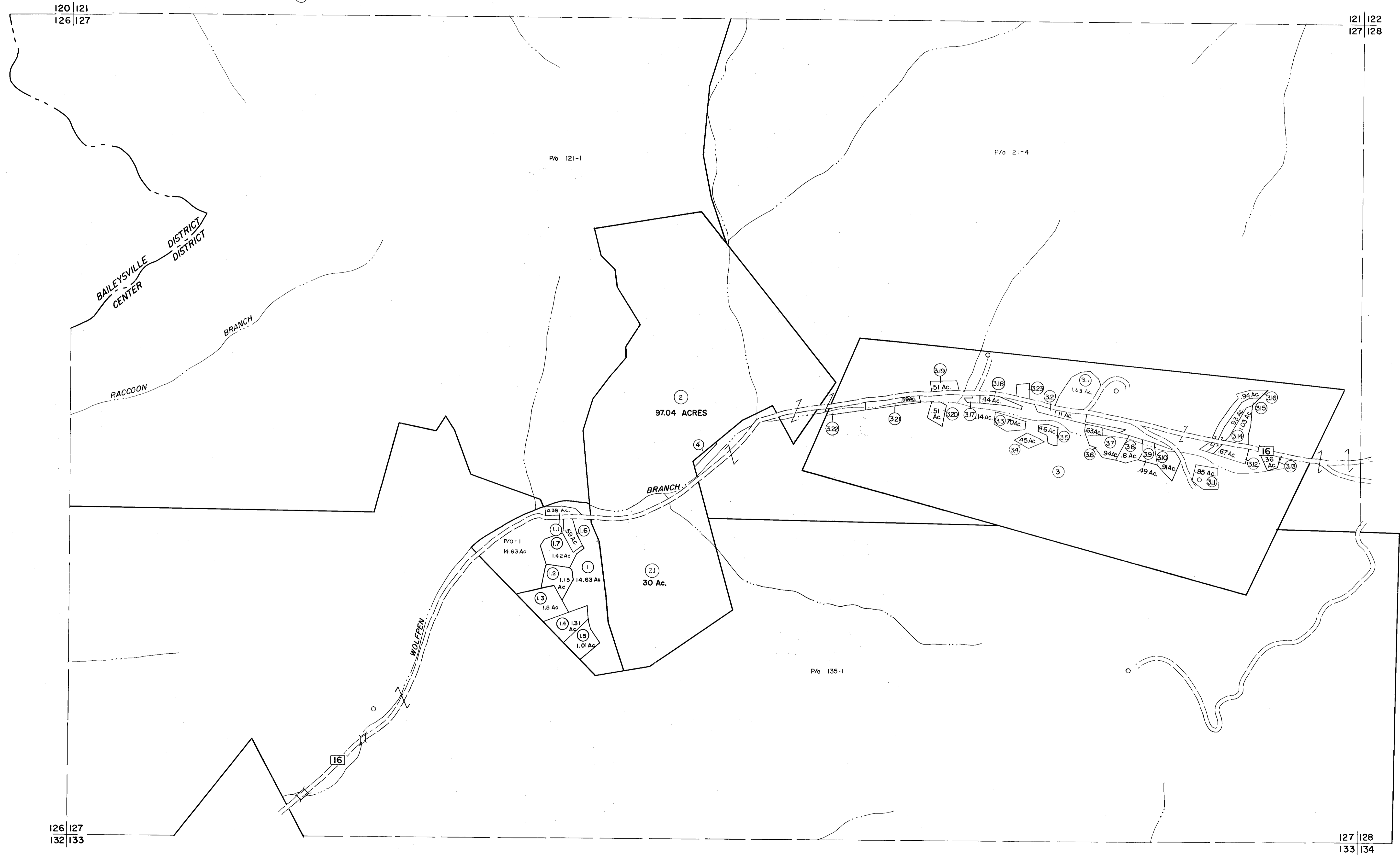


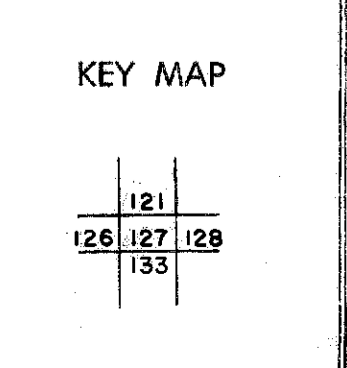
- 3.3 (56.86 X 223.64 X 80.68 X 0.91 X 0.79 X 98.51)
- 3.4 (122.47 X 113.25 X 61.71 X 61.95 X 134.39)
- 3.5 (16.39 X 93.32 X 88.43 X 66.79 X 63.08 X 82.55 X 77.54 X 47.71)
- 3.6 (145.03 X 149.56 X 104.55 X 110.27 X 51.48 X 111.15 X 76.23)
- 3.8 (120.74 X 113.44 X 89.13 X 94.34 X 84.66 X 238.87)
- 3.9 (8.93 X 71.23 X 105.79 X 76.91 X 89.13 X 113.43)
- 3.11 (89.63 X 182.51 X 109.35 X 111.17 X 143.91)
- 3.12 (225.93 X 122.24 X 706.83 X 117.99)
- 3.13 (186.80 X 95.35 X 774 X 185.23)
- 3.17 (104.55 X 45.06 X 70.6 X 20 X 71.49 X 64.52)
- 3.18 (21.35 X 95.67 X 185.22 X 0.10 X 35 X 29.34 X 55.98 X 24.28 X 64.52)
- 3.19 (23.79 X 260.23 X 76.94 X 68.66 X 111.02 X 78.14)
- 3.20 (76.26 X 42.80 X 10.148 X 41.06 X 142.21)
- 3.23 (81.25 X 38.57 X 88.57 X 12.36 X 71.34 X 61.69) 30 Ac.
- 4 (129.05 X 42.63 X 55.56 X 858.46 X 17.11) 20 Ac.



For Tax Purposes Only  
 Prepared by  
**MICHAEL BAKER, JR., INC.**  
 Consulting Engineers  
 Rochester, Pennsylvania

Legend	
Property line	Original lot line
Edge of pavement or roadway	Deed lot number
Corporation line	Parcel or index number
District line	Improvement
County line	Railroad

Revisions	
1	3-1-64
2	3-7-75 JC
3	Revised to 7-1-81
4	Revised to July 85 LA
5	July 1985 DL
6	OGIS 11/3/92 SAJ
7	SLS INC. 1/24/00 DSW
8	



**WYOMING COUNTY**  
 STATE OF WEST VIRGINIA  
 Office of Assessor

DISTRICT **CENTER**  
 SHEET NO: 127  
 Date, Aerial Photography: November, 1962 Date, Map: April, 1963  
 Photo No: Scale: 1" = 400'