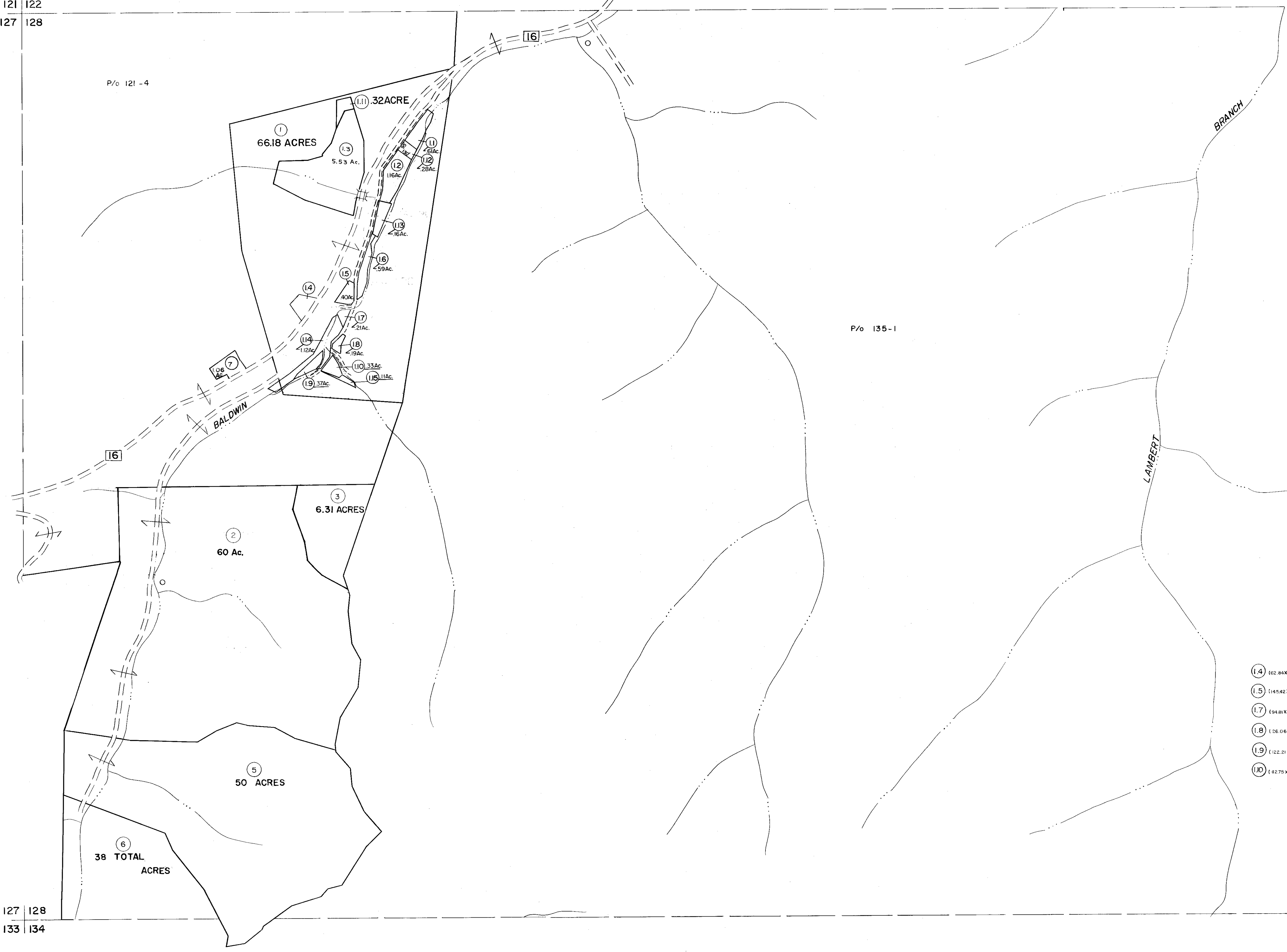


121 | 122  
127 | 128

122 | 123  
128 | 129

P/O 121-4

P/O 135-1



- (1.4) 102.84X182.60X49.29X109.55 X164.61 .55 Ac.
- (1.5) 114.42X29.50X28.0X108.8X135.2X66.46 X37.51 .40 Ac.
- (1.7) 194.61X71.2X118.17X40.28X94.51 .21 Ac.
- (1.8) 126.06X70.20X76.79X85.23X35.26X62.92X50.62 .19 Ac.
- (1.9) 122.21X72.59X59.69X50.37X34.41X86.21X72.78 .37 Ac.
- (1.10) 142.75X136.41X31.08X71.58X92.76X61.39X93.10 .33 Ac.

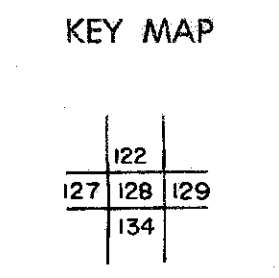
127 | 128  
133 | 134

128 | 129  
134 | 135

**For Tax Purposes Only**  
 Prepared by  
**MICHAEL BAKER, JR., INC.**  
 Consulting Engineers  
 Rochester, Pennsylvania

Legend	
Property line	Original lot line
Edge of pavement or roadway	Deed lot number
Corporation line	Parcel or index number
District line	Improvement
County line	Railroad

Revisions	
1	3-1-64
2	3/6/75
3	Revised 6-7-81
4	Revised to July 83 LM.
5	Revised 6-7-87
6	REV. TO 7-1-88 NCS
7	OGIS 11/4/92 SAJ
8	SLS INC. 1/24/00 DSW



**WYOMING COUNTY**  
 STATE OF WEST VIRGINIA  
 Office of Assessor

DISTRICT  
**CENTER**  
 SHEET NO: 128  
 Date, Aerial Photography: November, 1962 Date, Map: April, 1963  
 Photo No: Scale: 1" = 400'