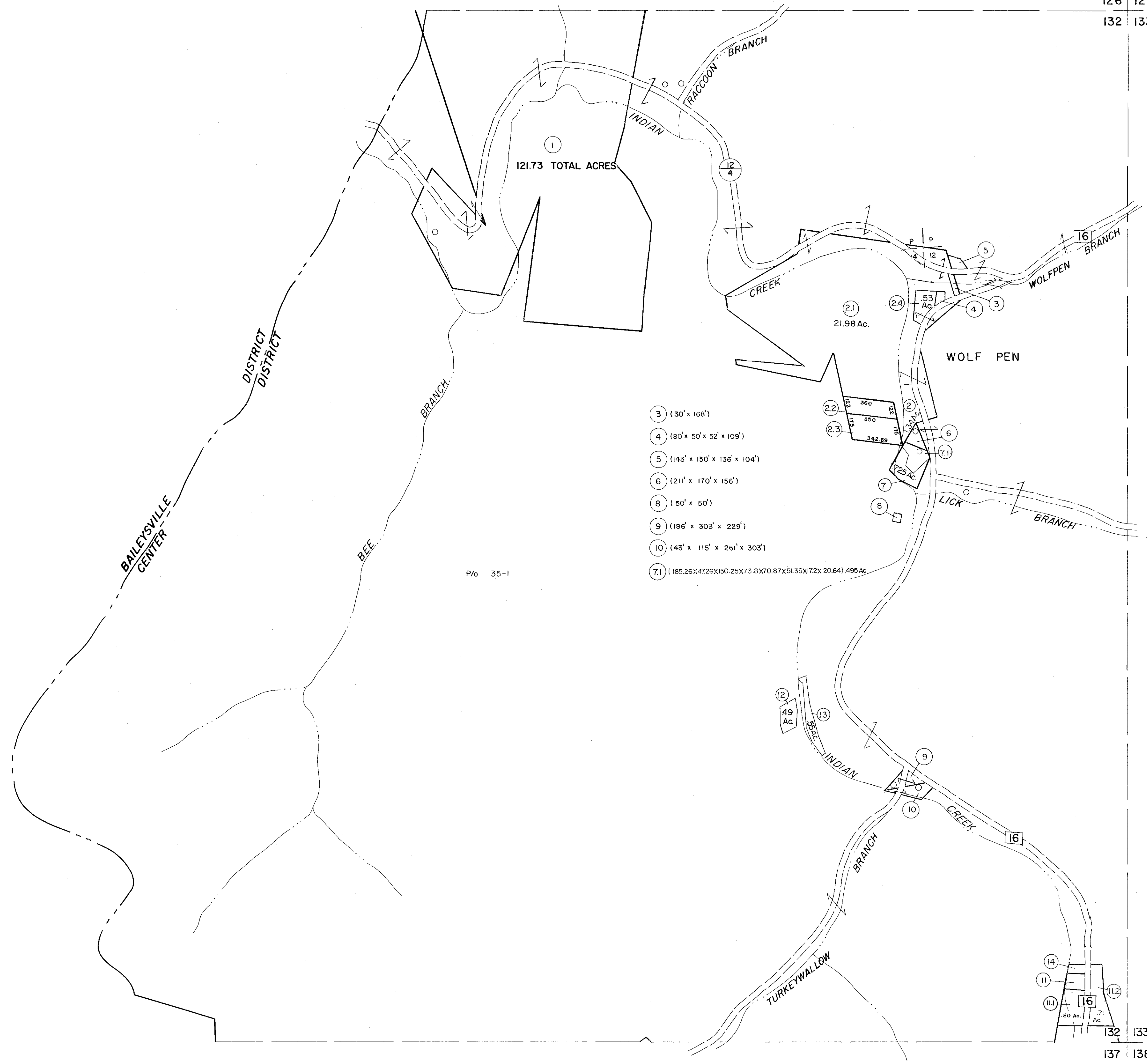


126
132

126 127
132 133



132
137

132 133
137 138

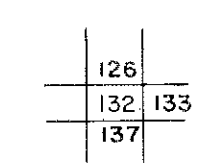
For Tax Purposes Only

Prepared by
MICHAEL BAKER, JR., INC.
Consulting Engineers
Rochester, Pennsylvania

Legend	
Property line	Original lot line
Edge of pavement or roadway	Deed lot number
Corporation line	Parcel or index number
District line	Improvement
County line	Railroad

Revisions			
1	3-1-64	9	SLS INC 11/16/98 DSW
2	Revised to 7-1-81	10	
3	Revised to 7-1-81	11	
4	Revised to 7-1-87	12	
5	OGIS 11/2/92 SAJ	13	
6	O.G.I.S 9-20-95 J.E.B	14	
7	OGIS 12/26/96 SAJ	15	
8		16	

KEY MAP



WYOMING COUNTY
STATE OF WEST VIRGINIA
Office of Assessor

DISTRICT
CENTER

SHEET NO: 132

Date, Aerial Photography: November, 1962 Date, Map: April, 1963
Photo No: Scale: 1" = 400'