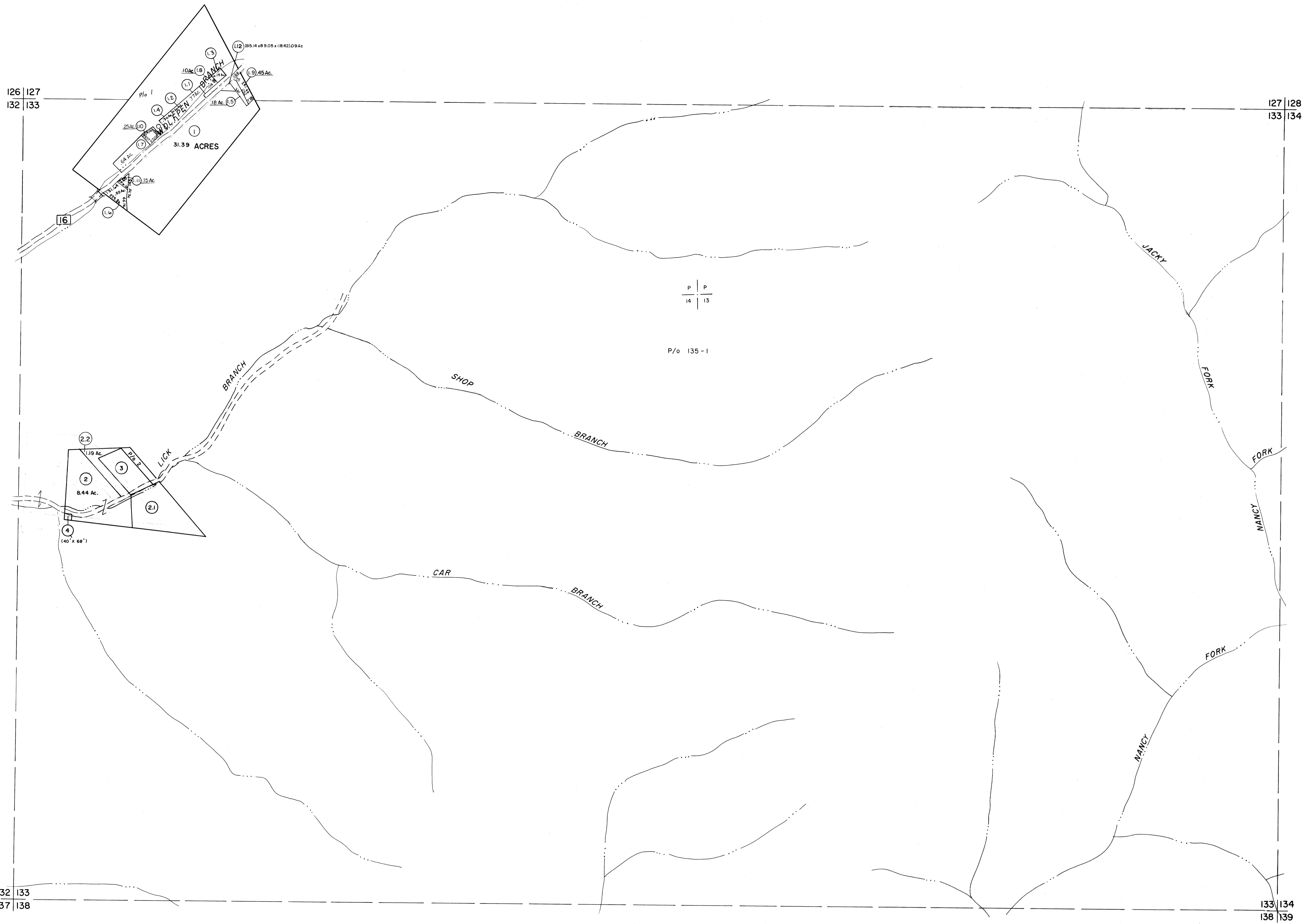


126 | 127
132 | 133

127 | 128
133 | 134

132 | 133
137 | 138

133 | 134
138 | 139



For Tax Purposes Only

Prepared by
MICHAEL BAKER, JR., INC.
Consulting Engineers
Rochester, Pennsylvania

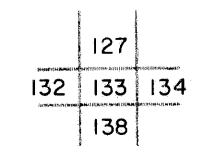
Legend

Property line	—————	Original lot line	-----
Edge of pavement or roadway	-----	Deed lot number	(15)
Corporation line	-----	Parcel or index number	(16)
District line	-----	Improvement	o
County line	-----	Railroad	—+—

Revisions

1	3-1-64	9		17	
2	3/6/74	10	Jc	18	
3	Revised to 7-1-81	11		19	
4	Revised to July 83	12	LM	20	
5	O.G.I.S 9-20-95	13	J.E.B	21	
6	ESI 1/30/03	14	REK	22	
7		15		23	
8		16		24	

KEY MAP



WYOMING COUNTY
STATE OF WEST VIRGINIA
Office of Assessor

DISTRICT

CENTER

SHEET NO: 133

Date, Aerial Photography: November, 1962 Date, Map: April, 1963
Photo No: Scale: 1" = 400'