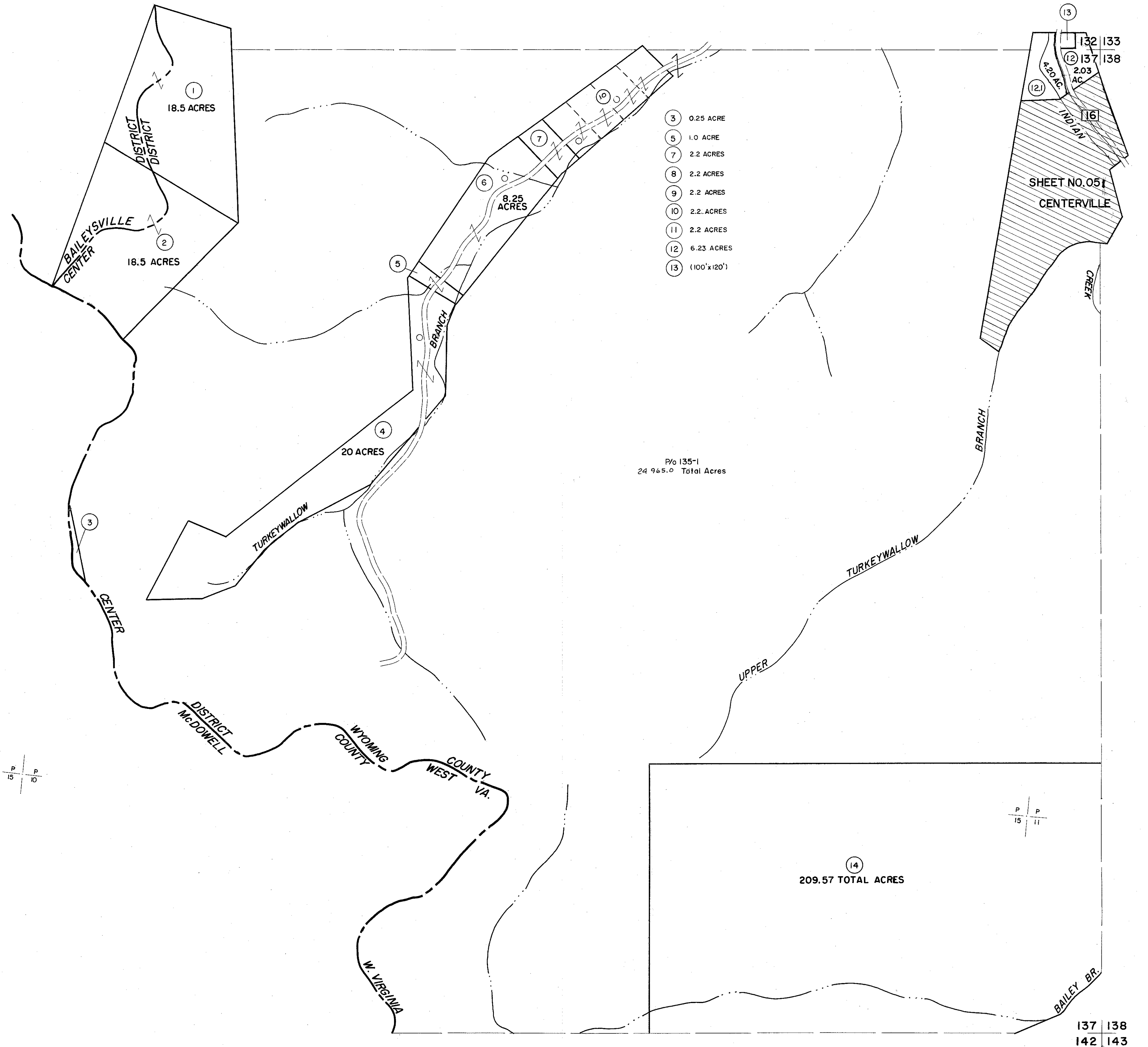


132
137

137
142



- 3 0.25 ACRE
- 5 1.0 ACRE
- 7 2.2 ACRES
- 8 2.2 ACRES
- 9 2.2 ACRES
- 10 2.2 ACRES
- 11 2.2 ACRES
- 12 6.23 ACRES
- 13 (100'x120')

P/O 135-1
24 965.0 Total Acres

14
209.57 TOTAL ACRES

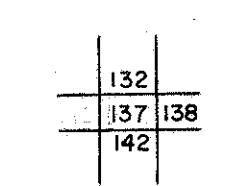
Legend

Property line	—	Original lot line	—
Edge of pavement or roadway	—	Deed lot number	(15)
Corporation line	—	Parcel or index number	(16)
District line	—	Improvement	o
County line	—	Railroad	—

Revisions

1	9-1-64	9	17
2	3/6/75 JC	10	18
3	Revised to 7-1-81 DP	11	19
4		12	20
5		13	21
6		14	22
7		15	23
8		16	24

KEY MAP



WYOMING COUNTY
STATE OF WEST VIRGINIA
Office of Assessor

DISTRICT

CENTER

SHEET NO: 137

Date, Aerial Photography: November, 1962 Date, Map: April, 1963
Photo No: Scale: 1" = 400'