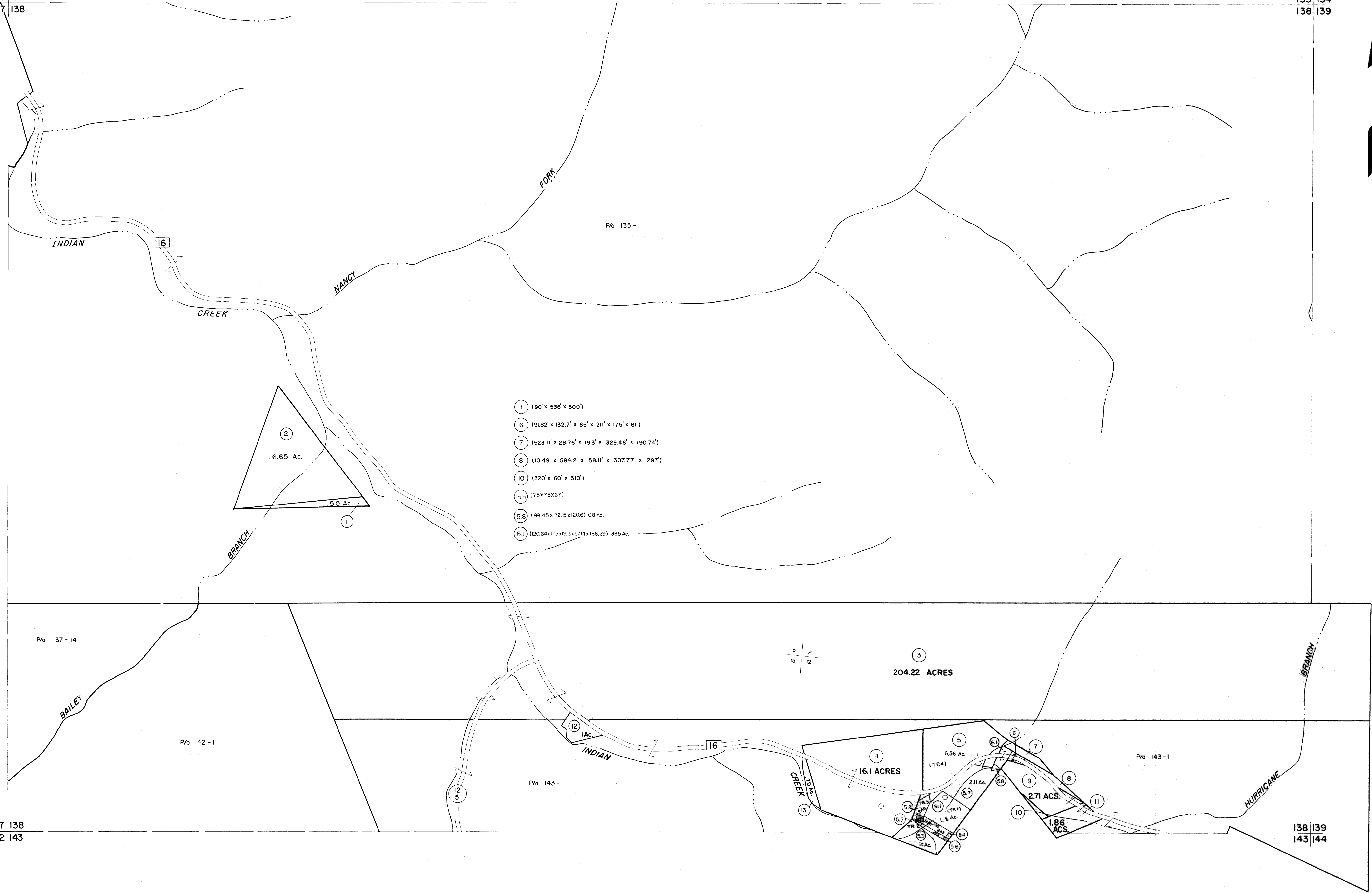


132 | 133
137 | 138

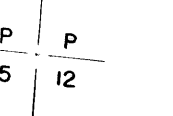
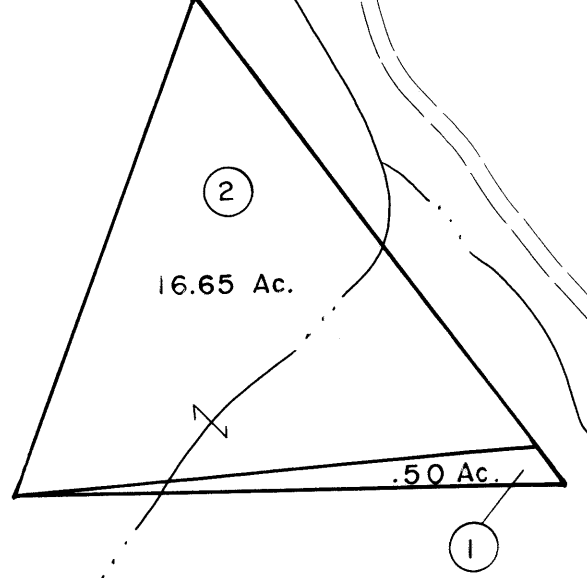
133 | 134
138 | 139

137 | 138
142 | 143

138 | 139
143 | 144



- 1 (90' x 536' x 500')
- 6 (91.82' x 132.7' x 65' x 21' x 175' x 6')
- 7 (523.11' x 28.76' x 19.3' x 329.46' x 190.74')
- 8 (10.49' x 584.2' x 58.11' x 307.77' x 297')
- 10 (320' x 60' x 310')
- 5.5 (75' x 75' x 67')
- 5.8 (99.45' x 72.5' x 120.6' x 0.8 Ac.)
- 6.1 (20.64' x 175' x 19.3' x 57.14' x 188.29' x 385 Ac.)



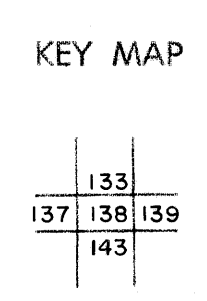
For Tax Purposes Only
 Prepared by
MICHAEL BAKER, JR., INC.
 Consulting Engineers
 Rochester, Pennsylvania

Legend

Property line	—	Original lot line	—
Edge of pavement or roadway	- - -	Dead lot number	(15)
Corporation line	- - - -	Parcel or index number	(16)
District line	- - - - -	Improvement	○
County line	- - - - -	Railroad	—+—

Revisions

1	3-1-64	9	17
2	3/6/75	J.C.	18
3	Revised to 7-1-81	—	19
4	Revised to 5-4-83	CM	20
5	Revised to 7-1-87	—	21
6	OGIS 12/26/96	SAJ	22
7	ESI 1/30/03	REK	23
8			24



WYOMING COUNTY
 STATE OF WEST VIRGINIA
 Office of Assessor

DISTRICT **CENTER**
SHEET NO: 138
 Date, Aerial Photography: November, 1962 Date, Map: April, 1963
 Photo No: _____ Scale: 1" = 400'