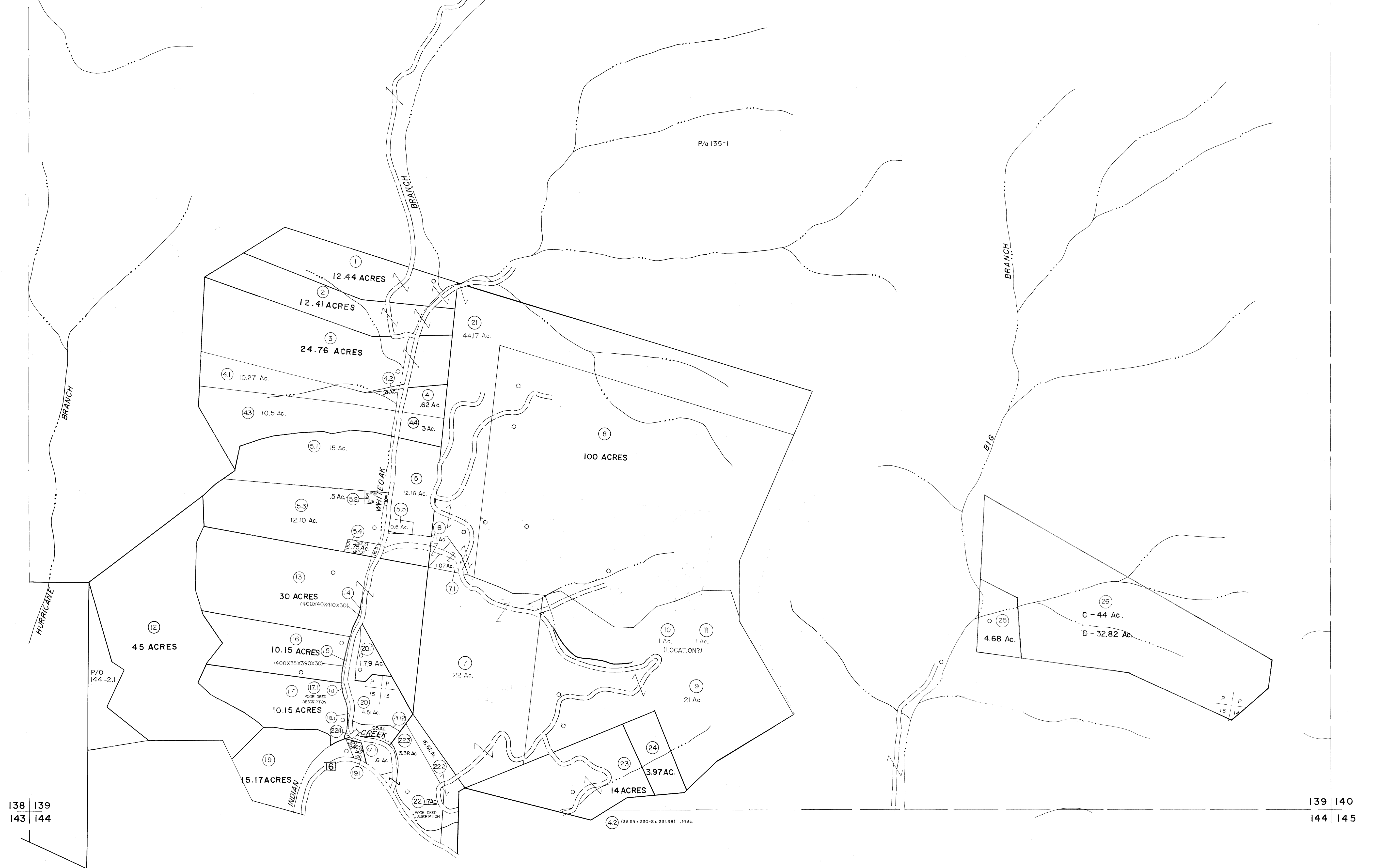


133 | 134
138 | 139

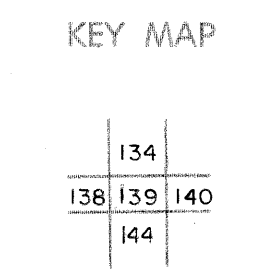
134 | 135
139 | 140



For Tax Purposes Only
 Prepared by
MICHAEL BAKER, JR., INC.
 Consulting Engineers
 Rochester, Pennsylvania

Legend	
Property line	Original lot line
Edge of pavement or roadway	Deed lot number
Corporation line	Parcel or index number
District line	Improvement
County line	Railroad

Revisions	
1	3-1-64
2	3/6/75
3	Revised to 7-1-81
4	Revised to July 83
5	Revised to 7-1-89
6	Revised to 7-1-87
7	SLS INC. 1/2/98 DSW
8	ESI 2/21/01 REK



WYOMING COUNTY
 STATE OF WEST VIRGINIA
 Office of Assessor

DISTRICT **CENTER**
SHEET NO: 139
 Date, Aerial Photography: November, 1962 Date, Map: April, 1963
 Photo No: Scale: 1" = 400'