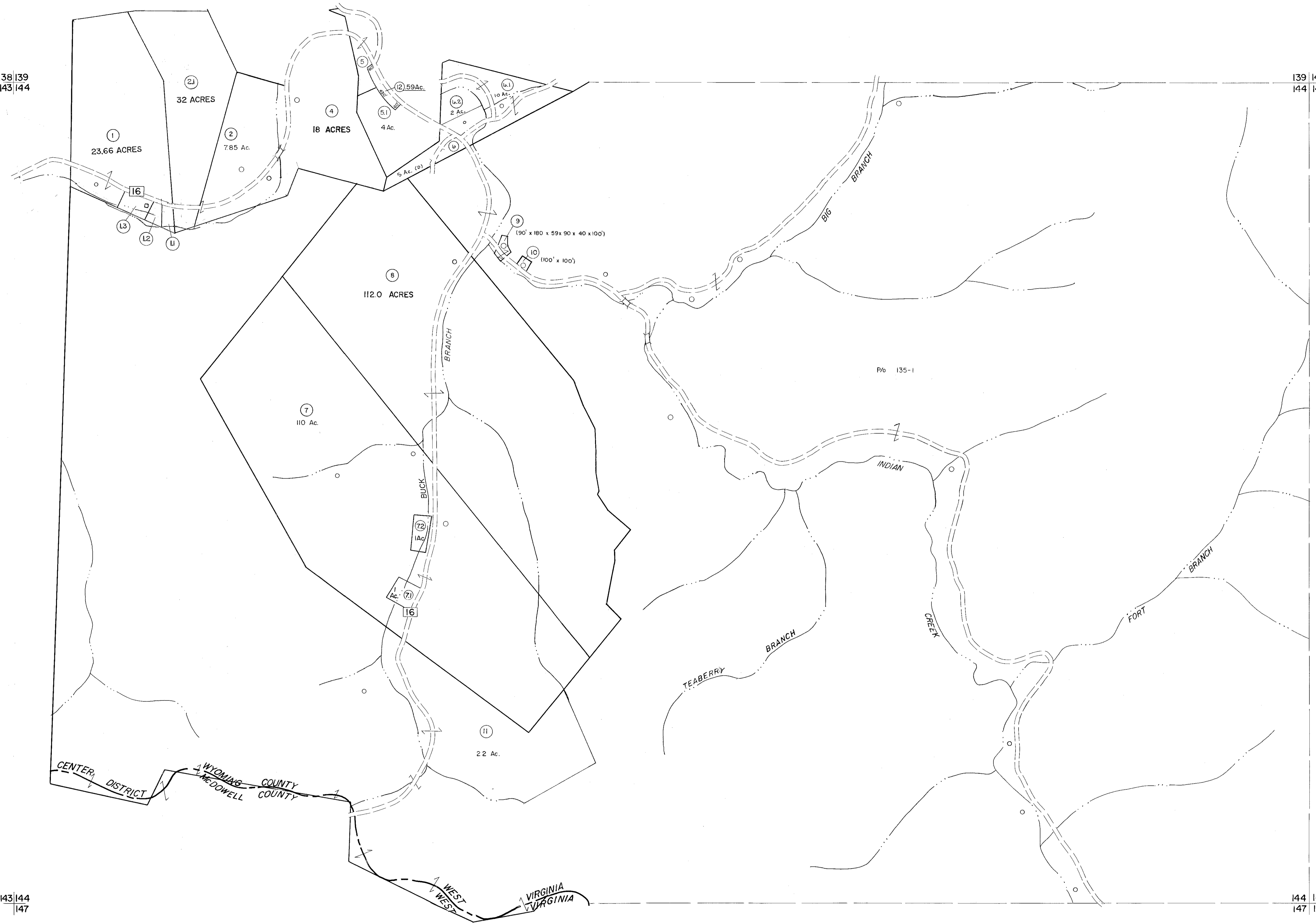


138 | 139
143 | 144

139 | 140
144 | 145



143 | 144
147

144 | 145
147 | 148

For Tax Purposes Only

Prepared by
MICHAEL BAKER, JR., INC.
Consulting Engineers
Rochester, Pennsylvania

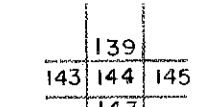
Legend

Property line	—————	Original lot line	-----
Edge of pavement or roadway	-----	Dead lot number	(15)
Corporation line	-----	Parcel or index number	(16)
District line	-----	Improvement	(17)
County line	-----	Railroad	-----

Revisions

1	3-1-64	9	SLS INC.	11/16/98	DSW	17
2	3/26/75	10				18
3	Revised to 7-1-81	11				19
4	Revised to 5/4/83	12				20
5	July 1985	13				21
6	Revised to 7-1-87	14				22
7	OGIS 11/2/92	15				23
8		16				24

KEY MAP



WYOMING COUNTY
STATE OF WEST VIRGINIA
Office of Assessor

DISTRICT

CENTER

SHEET NO: 144

Date, Aerial Photography: November, 1962 Date, Map: April, 1963
Photo No: Scale: 1" = 400'