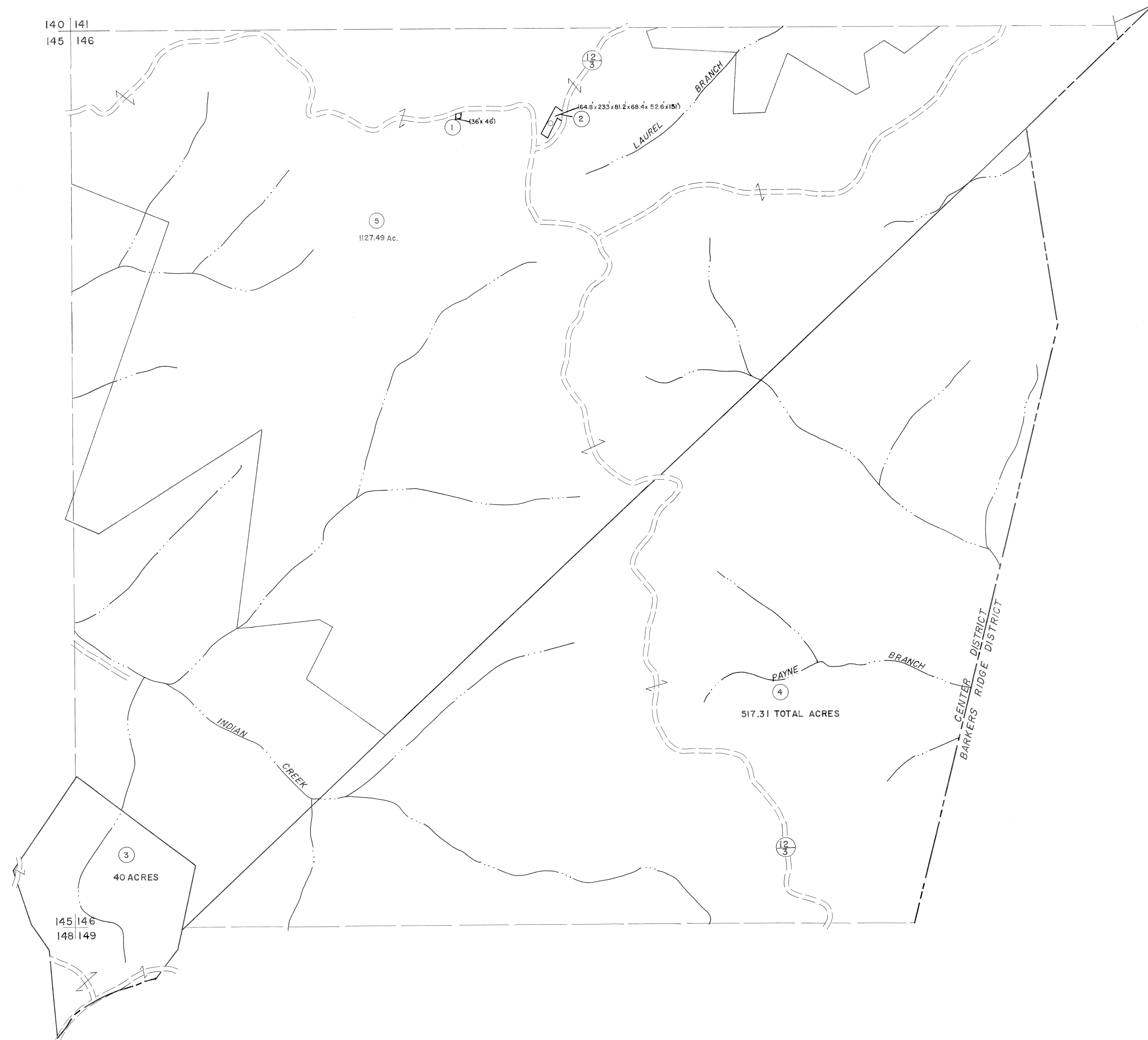


140 | 141  
145 | 146

141 |  
146 |



145 | 146  
148 | 149

146 |  
149 |

For Tax Purposes Only

Prepared by  
MICHAEL BAKER, JR., INC.  
Consulting Engineers  
Rochester, Pennsylvania

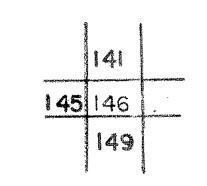
Legend

Property line	—————	Original lot line	—————
Edge of pavement or roadway	——— ———	Deed lot number	(15)
Corporation line	-----	Parcel or index number	(16)
District line	- - - - -	Improvement	o
County line	—————	Railroad	——+——

Revisions

1	3-1-64	9	17
2	3/26/74	JC	18
3	Revised to 7/18/01	REK	19
4	ESI 2/16/01	REK	20
5	ESI 2/16/02	REK	21
6			22
7			23
8			24

KEY MAP



WYOMING COUNTY  
STATE OF WEST VIRGINIA  
Office of Assessor

DISTRICT

CENTER

SHEET NO:146

Date, Aerial Photography: November, 1962 Date, Map: April, 1963  
Photo No: Scale: 1" = 400'