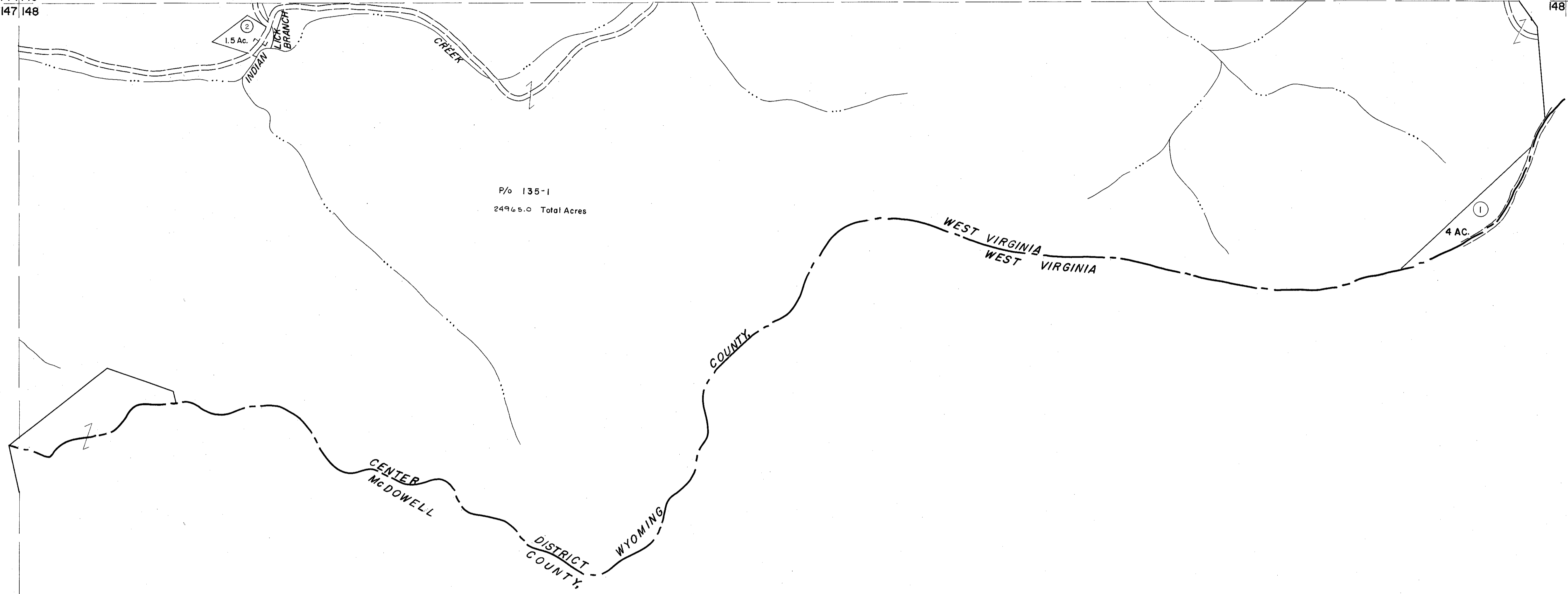


144|145
147|148

145|146
148|149



147|148

148|149

For Tax Purposes Only

Prepared by
MICHAEL BAKER, JR., INC.
Consulting Engineers
Rochester, Pennsylvania

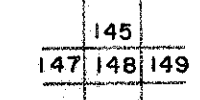
Legend

Property line	—————	Original lot line	-----
Edge of pavement or roadway	-----	Deed lot number	(15)
Corporation line	-----	Parcel or index number	(16)
District line	-----	Improvement	o
County line	-----	Railroad	+++++

Revisions

1	3-1-64	9	17
2	3/6/75	10	18
3	Revised to 7-1-83	11	19
4	7-1-83	12	20
5		13	21
6		14	22
7		15	23
8		16	24

KEY MAP



WYOMING COUNTY
STATE OF WEST VIRGINIA
Office of Assessor

DISTRICT

CENTER

SHEET NO:148

Date, Aerial Photography: November, 1962 Date, Map: April, 1963
Photo No: Scale: 1" = 400'